



Rotary Camps Glencairn NPC

Reg No. 2020/036817/08
Glen Road Glencairn

INFORMATION 2025

Camp Administration

ANTOINETTE BURGER

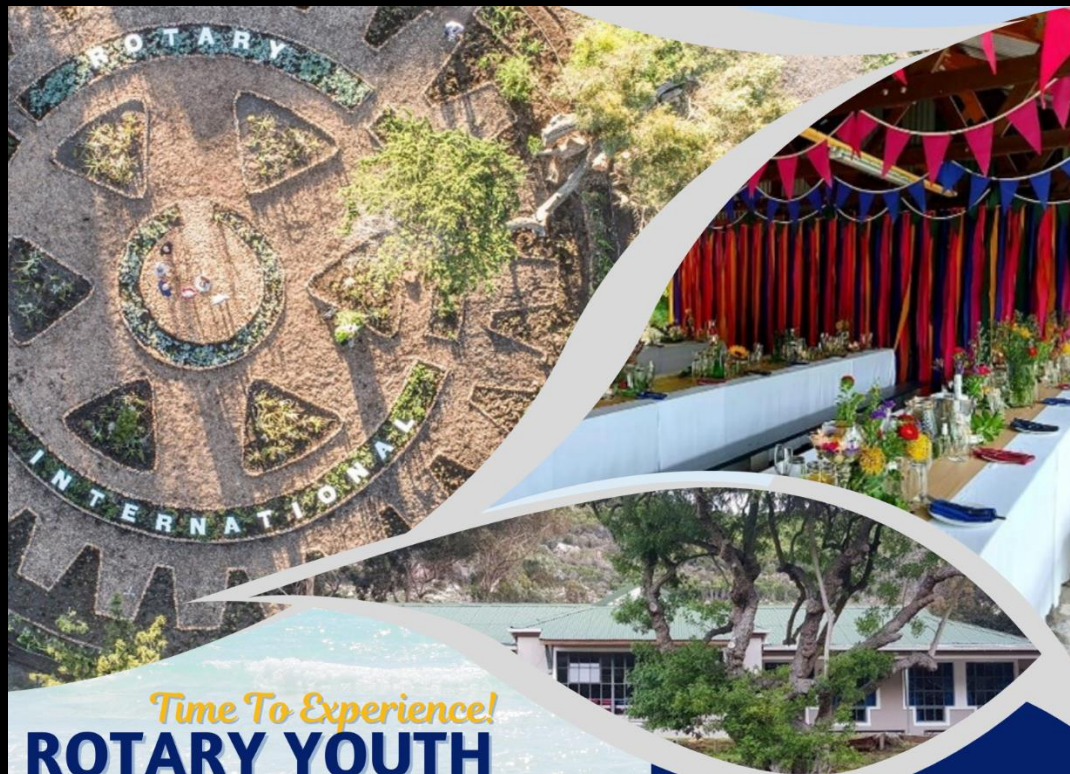
info@rotaryyouthcamps.co.za

083 3830514



Dear Friends of Rotary Camps

Thanks for the opportunity to share our newsletter with you.
We are open for reservations and would like to welcome all our clients to contact us at: bookings@rotaryyouthcamps.co.za for quotations and reservations.



Time To Experience!
**ROTARY YOUTH
CAMPS GLENCAIRN**
Where we share the power of a dream

A natural treasure lies in the Simons Town Area of Glencairn. Here you will find a variety of large group accommodations to fit your needs. A variety of activities will give your group an unforgettable experience!

BOOK NOW

Contact Us :

 **0834840294**

info@rotaryyouthcamps.co.za
www.rotaryyouthcamps.co.za

- Rotary Conference Venue
- Gordons Camp
- Roberts Rotary Camp
- Forest Walk & Venue
- Happy Haven
- Allan Jeffes Cabins
- Smuts Accommodation
- Hiking Trails - Else River
- Scout Tented Camping

Some Area activities:

- Tidal pools (10 minute hike)
- Scratch patch at Glencairn
- Cave golf at Glencairn
- Naval Museum



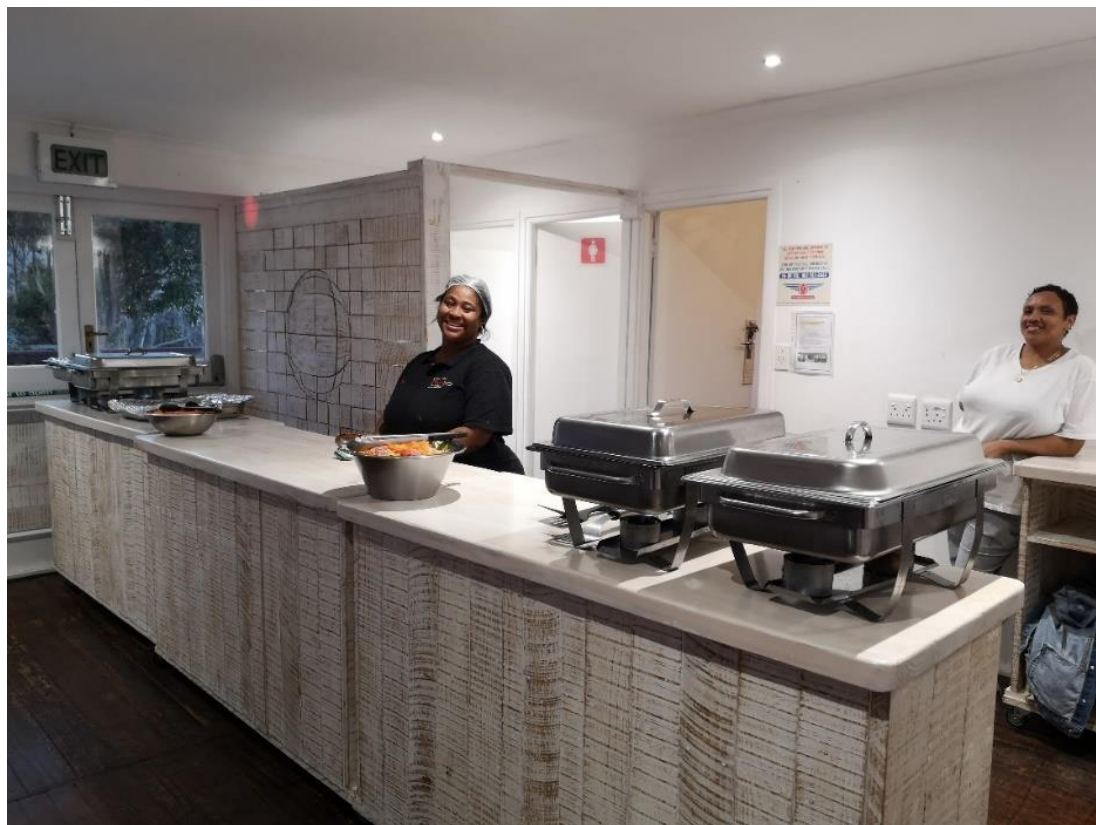
OUR FACILITIES

Conferencing

Our conference venue can accommodate 70 people.
All cutlery and crockery to be supplied by client.



Rotary Conference Centre





GORDONS CAMP (114 beds)



Gordon's Braai area:

Carols by glowstick event



A covered dining area with full kitchen can seat 70 people.



Teachers' accommodation at Gordons.



River Braai at Roberts Rotary Camp:

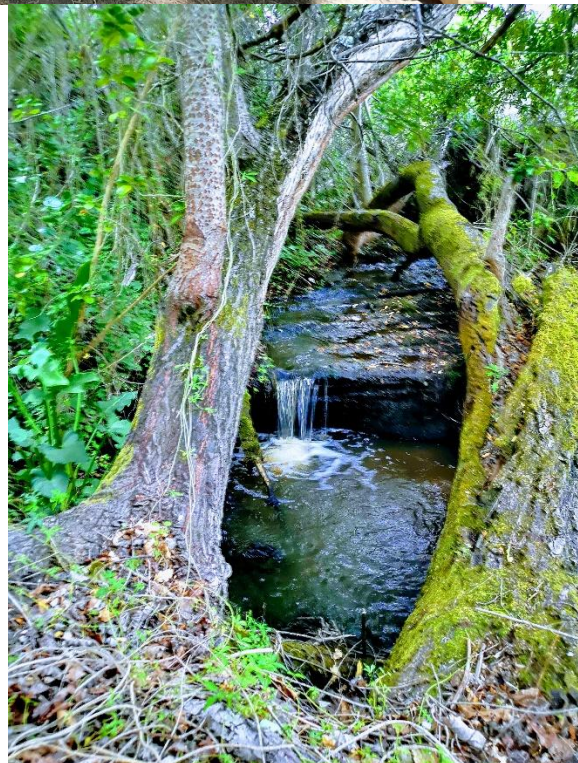
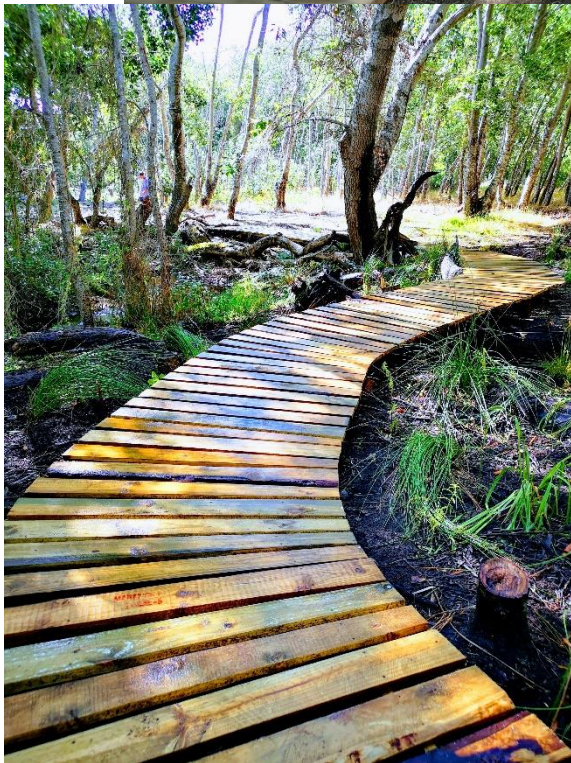
Braai, with covered dining area for 50 people and basic indoor wash up area with electrical points for your own equipment.





FOREST WALK AND NATURE WEDDING VENUE







ROTARY FYNBOS MANDALA



HAPPY HAVEN (56 beds)

Happy Haven has a hall and kitchen in the centre with boys and girls sleeping facilities and ablutions leading from it.



**ALLAN JEFFES (3 x 10 sleeper cabins)
ALLAN JEFFES BATHROOMS**





SMUTS (68 beds)

Clients need to bring their own bedding, cutlery, crockery, and all consumables.

SMUTS HALL



SMUTS KITCHEN



GIANT CHESS GAMES



Playpark



Obstacle course along the Else River



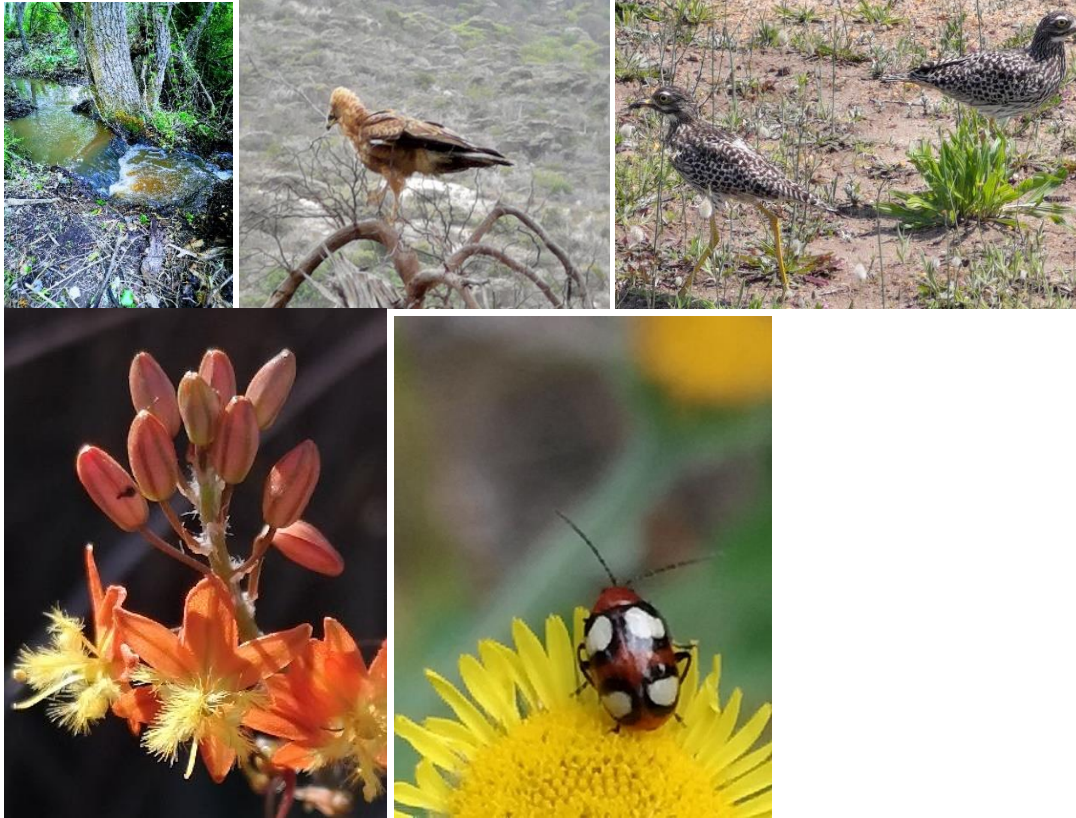
Hikes and walks along the Else River

The longest fynbos labyrinth in the Southern Hemisphere is at Rotary Camps Glencairn.





Hikes and walks along the Else River allow for education and exposure to fynbos and wooded areas in a stunning environment.



SCOUTS CAMPING





Some of the activities and places to visit are close to Rotary Camps.

- The City of Cape Town's tidal pool at Glencairn Beach is a 10 minute walk from the camps.



- Elsie's Peak Trail- <https://www.alltrails.com/trail/south-africa/western-cape/elsies-peak-trail>



- See penguins at Seaforth and Boulders Beach



- Take a trip to Cape Point



- Dig around in the Scratch Patch at Glencairn



- Cave golf at Scratch Patch at Glencairn



- Visit the SA Naval and sub marine Museums



- Just Nuisance naval dog statue in Jubilee Square, SimonsTown or hike to see his grave.



Warm regards.
Antoinette Burger
0834840294



